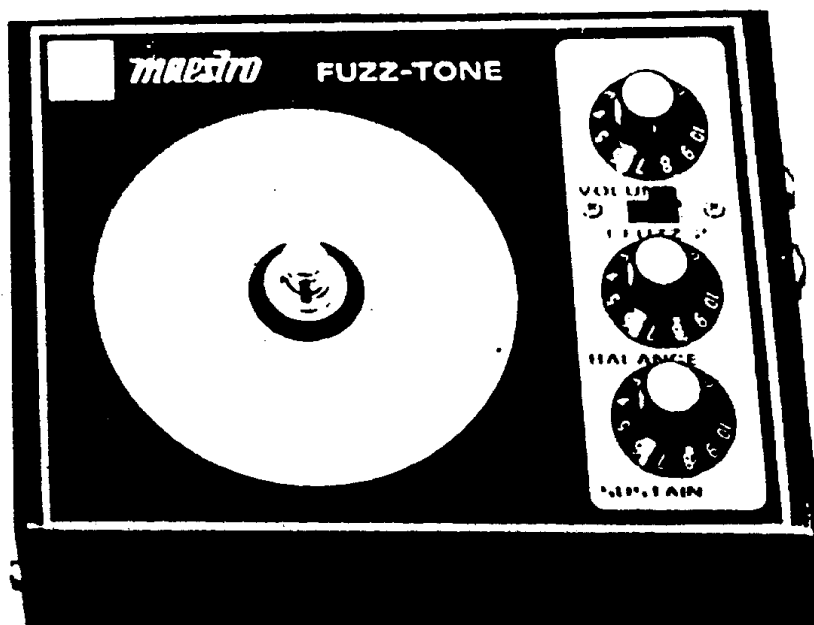
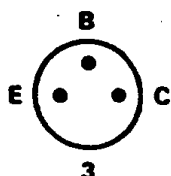
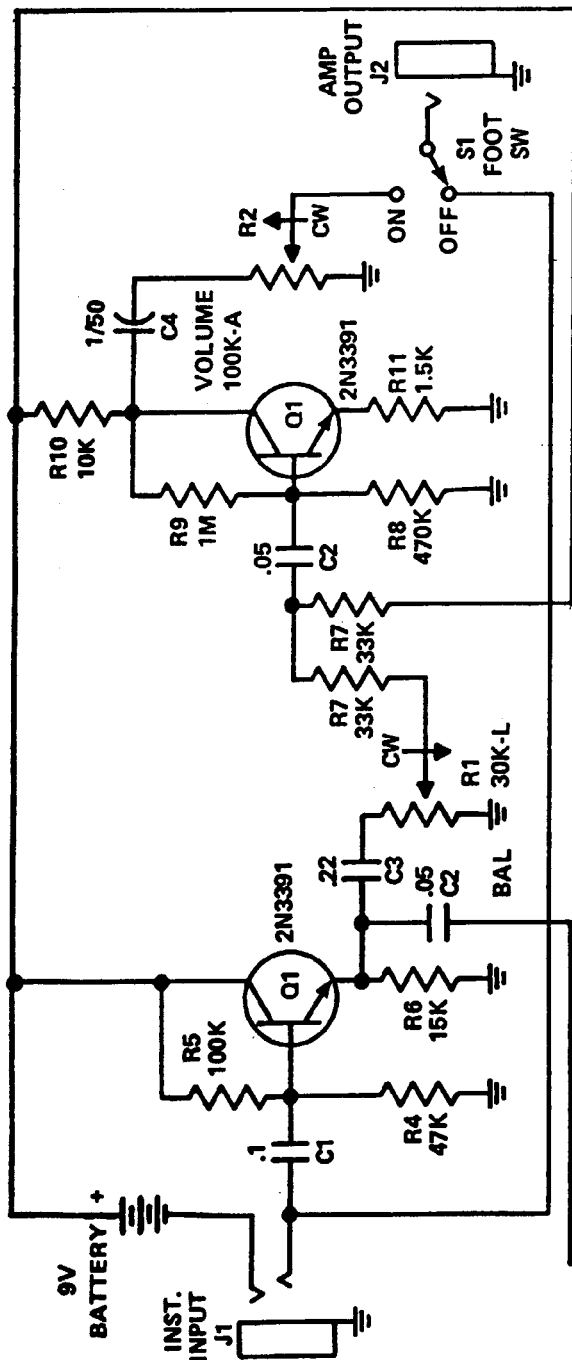


ALL TRANSISTORS, PART NO.
991-043350-001, 2N2614
OR 2N2613

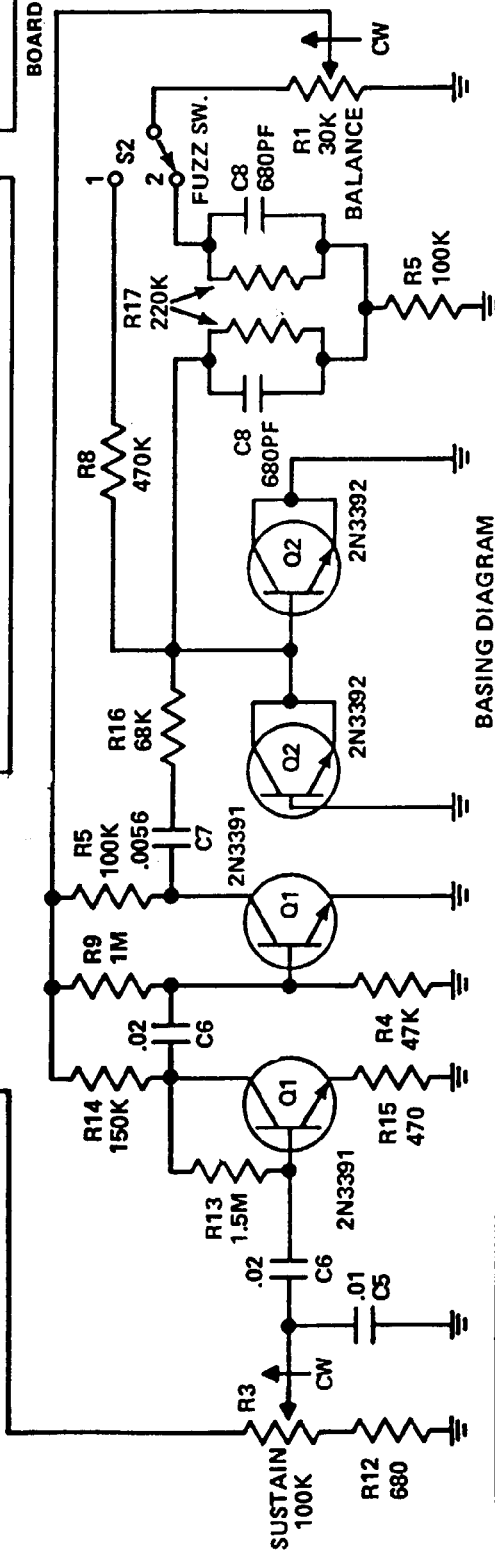
BASING DIAGRAM
BOTTOM VIEW



FUZZ TONE MODEL FZ-1A



BOARD TOP VIEW



**BASING DIAGRAM
BOTTOM VIEW**

REF DESIG	PART NO.	DESCRIPTION
Q1	991-041067-001	Transistor, 2N3381
Q2	991-042017-001	Transistor, 2N3382
R1	925-043002-001	Resistor, Variable, 30K, Dual Linear
R2	925-043003-001	Resistor, Variable, 100K, Audio
R3	925-043001-001	Resistor, Variable, 100K, Linear
S1	980-040127-001	Switch, Push, SPDT
S2	980-042136-001	Switch, Slide, SPDT

2N3391 - replace with
BC109C, NTE123A
hfe = 200

ECB
2N3391
2N3392

NOTES:

1. UNLESS OTHERWISE SPECIFIED:
ALL RESISTORS IN OHMS, $\pm 10\%$, 1/2W.
ALL CAPACITORS IN MFD.

Added Note